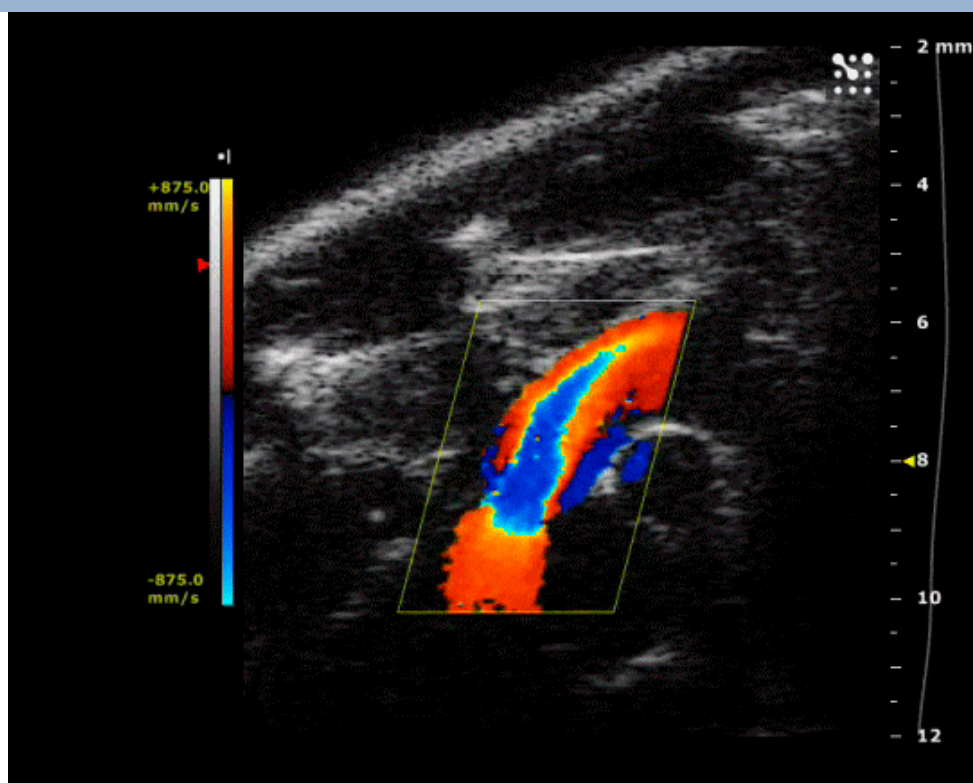


2012

# Bibliography



Cardiovascular  
Research

## **Top Cardiovascular Research Papers**

### **Table of Contents**

1.	Review Papers	1
2.	Abdominal Aortic Aneurysm	1
3.	Atherosclerosis	2
4.	Atrial Function	2
5.	Cardiac Hypertrophy	3
6.	Cardiac Injection	4
7.	Cardiomyopathy	4
8.	Chick Embryo	4-5
9.	Conscious Imaging	5
10.	Contrast	5
11.	Developmental Cardiology	5-6
12.	Diastolic Dysfunction	6
13.	Endothelial Dysfunction	6
14.	Effects of drugs	6
15.	Graft Transplantation	6
16.	Holt-Oram Syndrome	7
17.	Hypertrophy	7
18.	Left Ventricular Function	7
19.	Longitudinal and MRI Correlation	8

20.	Marfan Syndrome	8
21.	Myocardial Infarction	9-10
22.	Neonatal cardiovascular function	10
23.	Pulmonary Hypertension	10-11
24.	Rabbit Cardiovascular	11
25.	Rat Cardiovascular	11
26.	Right Ventricle	12
27.	Stem Cells	12
28.	Strain	12
29.	Stress Echocardiography	12
30.	Systolic Function	12
31.	Valvular Flow & Function	13
32.	Vascular	13-14
33.	Vascular Injection	14

## Bibliography – Cardiovascular Research

### **Review Papers**

- [New Approaches in Small Animal Echocardiography: Imaging the Sounds of Silence.](#)  
Ram R, Mickelsen DM, Theodoropoulos C, Blaxall BC.  
*Am J Physiol Heart Circ Physiol.* 2011 Aug 26. [Epub ahead of print]

### **Abdominal Aortic Aneurysm**

- [Transcriptional profiling and network analysis of the murine angiotensin II-induced abdominal aortic aneurysm.](#)  
Spin JM, Hsu M, Azuma J, Tedesco MM, Deng A, Dyer JS, Maegdefessel L, Dalman RL, Tsao PS.  
*Physiol Genomics.* 2011 Sep 8;43(17):993-1003
- [Placental growth factor regulates cardiac inflammation through the tissue inhibitor of metalloproteinases-3/tumor necrosis factor- \$\alpha\$ -converting enzyme axis: crucial role for adaptive cardiac remodeling during cardiac pressure overload.](#)  
Carnevale D, Cifelli G, Mascio G, Madonna M, Sbroggiò M, Perrino C, Persico MG, Frati G, Lembo G.  
*Circulation.* 2011 Sep 20;124(12):1337-50.
- [Telomerase deficiency in bone marrow-derived cells attenuates angiotensin II-induced abdominal aortic aneurysm formation.](#)  
Findeisen HM, Gizard F, Zhao Y, Cohn D, Heywood EB, Jones KL, Lovett DH, Howatt DA, Daugherty A, Bruemmer D.  
*Arterioscler Thromb Vasc Biol.* 2011 Feb;31(2):253-60
- [Quantitative estimates of the variability of in vivo sonographic measurements of the mouse aorta for studies of abdominal aortic aneurysms and related arterial diseases.](#)  
Sampson UK, Perati PR, Prins PA, Pham W, Liu Z, Harrell FE Jr, Linton MF, *et al.*  
*J Ultrasound Med* 2011 Jun;30(6):773-84
- [Telomerase deficiency in bone marrow-derived cells attenuates angiotensin II-induced abdominal aortic aneurysm formation.](#)  
Findeisen HM, Gizard F, Zhao Y, Cohn D, Heywood EB, Jones KL, Lovett DH, *et al.*  
*Arterioscler Thromb Vasc Biol* 2011 Feb;31(2):253-60.
- [Influences of aortic motion and curvature on vessel expansion in murine experimental aneurysms.](#)  
Goergen CJ, Azuma J, Barr KN, Maegdefessel L, Kallop DY, Gogineni A, Grewall A, *et al.*  
*Arterioscler Thromb Vasc Biol* 2011 Feb;31(2):270-9.
- [Low-level laser irradiation inhibits abdominal aortic aneurysm progression in apolipoprotein E-deficient mice.](#)  
Gavish L, Rubinstein C, Bulut A, Berlatzky Y, Beerli R, Gilon D, *et al.*  
*Cardiovasc Res* 2009 Sep 1;83(4):785-92.
- [Apelin prevents aortic aneurysm formation by inhibiting macrophage inflammation.](#)  
Leeper NJ, Tedesco MM, Kojima Y, Schultz GM, Kundu RK, Ashley EA, *et al.*  
*Am J Physiol Heart Circ Physiol* 2009 May;296(5):H1329-35.

## Bibliography – Cardiovascular Research

### **Atherosclerosis**

- [A critical function of Th17 proinflammatory cells in the development of atherosclerotic plaque in mice.](#)  
Gao Q, Jiang Y, Ma T, Zhu F, Gao F, Zhang P, Guo C, Wang Q, *et al.*  
*J Immunol* 2010 Nov 15;185(10):5820-7.
- [Aortic regurgitation dramatically alters the distribution of atherosclerotic lesions and enhances atherogenesis in mice.](#)  
Zhou YQ, Zhu SN, Foster FS, Cybulsky MI, Henkelman RM.  
*Arterioscler Thromb Vasc Biol* 2010 Jun;30(6):1181-8.
- [Effects of fasudil on early atherosclerotic plaque formation and established lesion progression in apolipoprotein E-knockout mice.](#)  
Wu DJ, Xu JZ, Wu YJ, Jean-Charles L, Xiao B, Gao PJ, *et al.*  
*Atherosclerosis* 2009 Nov;207(1):68-73.
- [Partial carotid ligation is a model of acutely induced disturbed flow, leading to rapid endothelial dysfunction and atherosclerosis.](#)  
Nam D, Ni CW, Rezvan A, Suo J, Budzyn K, Llanos A, *et al.*  
*Am J Physiol Heart Circ Physiol* 2009 Oct;297(4):H1535-43.
- [A novel 3-dimensional micro-ultrasound approach to automated measurement of carotid arterial plaque volume as a biomarker for experimental atherosclerosis.](#)  
Walker M 3rd, Campbell BR, Azer K, Tong C, Fang K, Cook JJ, *et al.*  
*Atherosclerosis* 2009 May;204(1):55-65.
- [Atherosclerotic plaque disruption induced by stress and lipopolysaccharide in apolipoprotein E knockout mice.](#)  
Ni M, Wang Y, Zhang M, Zhang PF, Ding SF, Liu CX, *et al.*  
*Am J Physiol Heart Circ Physiol* 2009 May;296(5):H1598-606.
- [Micro-ultrasound imaging assessment of carotid plaque characteristics in apolipoprotein-E knockout mice.](#)  
Ni M, Zhang M, Ding SF, Chen WQ, Zhang Y.  
*Atherosclerosis* 2008 Mar;197(1):64-71.
- [Non-invasive real-time imaging of atherosclerosis in mice using ultrasound biomicroscopy.](#)  
Gan LM, Grönros J, Hägg U, Wikström J, Theodoropoulos C, Friberg P, *et al.*  
*Atherosclerosis* 2007 Feb;190(2):313-20.

### **Atrial Function**

- [Knock-in gain-of-function sodium channel mutation prolongs atrial action potentials and alters atrial vulnerability.](#)  
Blana A, Kaese S, Fortmüller L, Laakmann S, Damke D, van Bragt K, *et al.*  
*Heart Rhythm*. 2010 Dec;7(12):1862-9.

## Bibliography – Cardiovascular Research

### **Cardiac Hypertrophy**

- [Ryanodine receptor type 2 is required for the development of pressure overload-induced cardiac hypertrophy.](#)  
Zou Y, Liang Y, Gong H, Zhou N, Ma H, Guan A, Sun A, Wang P, Niu Y, Jiang H, Takano H, Toko H, Yao A, Takeshima H, Akazawa H, Shiojima I, Wang Y, Komuro I, Ge J. *Hypertension*. 2011 Dec;58(6):1099-110
- [Hyperphosphorylation of mouse cardiac titin contributes to transverse aortic constriction-induced diastolic dysfunction.](#)  
Hudson B, Hidalgo C, Saripalli C, Granzier H. *Circ Res*. 2011 Sep 30;109(8):858-66
- [Cardiac raptor ablation impairs adaptive hypertrophy, alters metabolic gene expression, and causes heart failure in mice.](#)  
Shende P, Plaisance I, Morandi C, Pellieux C, Berthonneche C, Zorzato F, *et al.* *Circulation* 2011 Mar 15;123(10):1073-82
- [Accelerated development of pressure overload-induced cardiac hypertrophy and dysfunction in an RyR2-R176Q knockin mouse model.](#)  
van Oort RJ, Respress JL, Li N, Reynolds C, De Almeida AC, Skapura DG, De Windt LJ, Wehrens XH. *Hypertension*. 2010 Apr;55(4):932-8
- [Accelerated development of pressure overload-induced cardiac hypertrophy and dysfunction in an RyR2-R176Q knockin mouse model.](#)  
van Oort RJ, Respress JL, Li N, Reynolds C, De Almeida AC, Skapura DG, *et al.* *Hypertension* 2010 Apr;55(4):932-8.
- [NF-kappaB activation is required for adaptive cardiac hypertrophy.](#)  
Zelarayan L, Renger A, Noack C, Zafiriou MP, Gehrke C, van der Nagel R, *et al.* *Cardiovasc Res* 2009 Dec 1;84(3):416-24.
- [Cardiomyocyte-specific loss of neurofibromin promotes cardiac hypertrophy and dysfunction.](#)  
Xu J, Ismat FA, Wang T, Lu MM, Antonucci N, Epstein JA. *Circ Res* 2009 Jul 31;105(3):304-11.
- [Alpha B-crystallin suppresses pressure overload cardiac hypertrophy.](#)  
Kumarapeli AR, Su H, Huang W, Tang M, Zheng H, Horak KM, *et al.* *Circ Res* 2008 Dec 5;103(12):1473-82.
- [Cardiac response to pressure overload in 129S1/SvImJ and C57BL/6J mice: temporal- and background-dependent development of concentric left ventricular hypertrophy.](#)  
Barrick CJ, Rojas M, Schoonhoven R, Smyth SS, Threadgill DW. *Am J Physiol Heart Circ Physiol* 2007 May;292(5):H2119-30.

## Bibliography – Cardiovascular Research

### **Cardiac Injection**

- [Image-guided cardiac cell delivery using high-resolution small-animal ultrasound.](#)  
Rodriguez-Porcel M, Gheysens O, Chen IY, Wu JC, Gambhir SS.  
*Mol Ther* 2005 Dec;12(6):1142-7.
- [Closed-chest cell injections into mouse myocardium guided by high-resolution echocardiography.](#)  
Springer ML, Sievers RE, Viswanathan MN, Yee MS, Foster E, Grossman W, *et al.*  
*Am J Physiol Heart Circ Physiol* 2005 Sep;289(3):H1307-14.

### **Cardiomyopathy**

- [Treatment with selumetinib preserves cardiac function and improves survival in cardiomyopathy caused by mutation in the lamin A/C gene.](#)  
Muchir A, Reilly SA, Wu W, Iwata S, Homma S, Bonne G, Worman HJ.  
*Cardiovasc Res.* 2012 Feb 1;93(2):311-9.
- [Loss of hypoxia-inducible factor prolyl hydroxylase activity in cardiomyocytes phenocopies ischemic cardiomyopathy.](#)  
Moslehi J, Minamishima YA, Shi J, Neuberg D, Charytan DM, Padera RF, *et al.*  
*Circulation* 2010 Sep 7;122(10):1004-16
- [Involvement of reductive stress in the cardiomyopathy in transgenic mice with cardiac-specific overexpression of heat shock protein 27.](#)  
Zhang X, Min X, Li C, Benjamin IJ, Qian B, Zhang X, Ding Z, Gao X, Yao Y, *et al.*  
*Hypertension* 2010 Jun;55(6):1412-7.
- [Oxidative stress regulates left ventricular PDE5 expression in the failing heart.](#)  
Lu Z, Xu X, Hu X, Lee S, Traverse JH, Zhu G, *et al.*  
*Circulation* 2010 Apr 6;121(13):1474-83.
- [Myeloid differentiation factor-88/interleukin-1 signaling controls cardiac fibrosis and heart failure progression in inflammatory dilated cardiomyopathy.](#)  
Blyszczuk P, Kania G, Dieterle T, Marty RR, Valaperti A, Berthonneche C, *et al.*  
*Circ Res* 2009 Oct 23;105(9):912-20.
- [Hypoxia induces dilated cardiomyopathy in the chick embryo: mechanism, intervention, and long-term consequences.](#)  
Tintu A, Rouwet E, Verlohren S, Brinkmann J, Ahmad S, Crispi F, *et al.*  
*PLoS One* 2009;4(4):e5155.

### **Chick Embryo**

- [Doppler flow velocity waveforms in the embryonic chicken heart at developmental stages corresponding to 5-8 weeks of human gestation.](#)  
Oosterbaan AM, Ursem NT, Struijk PC, Bosch JG, van der Steen AF, Steegers EA.  
*Ultrasound Obstet Gynecol* 2009 Jun;33(6):638-44.

## Bibliography – Cardiovascular Research

- [Hypoxia induces dilated cardiomyopathy in the chick embryo: mechanism, intervention, and long-term consequences.](#)  
Tintu A, Rouwet E, Verlohren S, Brinkmann J, Ahmad S, Crispi F, *et al.*  
*PLoS One* 2009;4(4):e5155.

### **Conscious Imaging**

- [Sustained hemodynamic stress disrupts normal circadian rhythms in calcineurin-dependent signaling and protein phosphorylation in the heart.](#)  
Sachan N, Dey A, Rotter D, Grinsfelder DB, Battiprolu PK, Sikder D, Copeland V, *et al.*  
*Circ Res* 2011 Feb 18;108(4):437-45.

### **Contrast**

- [Molecular Imaging of Vasa Vasorum Neovascularization via DEspR-targeted Contrast-enhanced Ultrasound Micro-imaging in Transgenic Atherosclerosis Rat Model.](#)  
Decano JL, Moran AM, Ruiz-Opazo N, Herrera VL.  
*Mol Imaging Biol* 2010 Oct 23.

### **Developmental Cardiology**

- [Ablation of Nkx2-5 at mid-embryonic stage results in premature lethality and cardiac malformation.](#)  
Terada R, Warren S, Lu JT, Chien KR, Wessels A, Kasahara H.  
*Cardiovasc Res* 2011 Jul 15;91(2):289-99
- [Reduced vessel elasticity alters cardiovascular structure and function in newborn mice.](#)  
Wagenseil JE, Ciliberto CH, Knutsen RH, Levy MA, Kovacs A, Mecham RP.  
*Circ Res* 2009 May 22;104(10):1217-24.
- [Mouse heart valve structure and function: echocardiographic and morphometric analyses from the fetus through the aged adult.](#)  
Hinton RB Jr, Alfieri CM, Witt SA, Glascock BJ, Khoury PR, Benson DW, *et al.*  
*Am J Physiol Heart Circ Physiol* 2008 Jun;294(6):H2480-8.
- [Fgl2 deficiency causes neonatal death and cardiac dysfunction during embryonic and postnatal development in mice.](#)  
Mu J, Qu D, Bartczak A, Phillips MJ, Manuel J, He W, *et al.*  
*Physiol Genomics* 2007 Sep 19;31(1):53-62.
- [Initial experience with high frequency ultrasound for the newborn C57BL mouse.](#)  
Bose AK, Mathewson JW, Anderson BE, Andrews AM, Martin Gerdes A, Benjamin Perryman M, *et al.*  
*Echocardiography* 2007 Apr;24(4):412-9.
- [Embryonic and neonatal phenotyping of genetically engineered mice.](#)  
Kulandavelu S, Qu D, Sunn N, Mu J, Rennie MY, Whiteley KJ, *et al.*  
*ILAR J* 2006;47(2):103-17.

## Bibliography – Cardiovascular Research

- [Developmental changes in left and right ventricular diastolic filling patterns in mice.](#)  
Zhou YQ, Foster FS, Parkes R, Adamson SL.  
*Am J Physiol Heart Circ Physiol* 2003 Oct;285(4):H1563-75.

### **Diastolic Dysfunction**

- [Sildenafil reverses cardiac dysfunction in the mdx mouse model of Duchenne muscular dystrophy.](#)  
Adamo CM, Dai DF, Percival JM, Minami E, Willis MS, Patrucco E, Froehner SC, Beavo JA.  
*Proc Natl Acad Sci U S A.* 2010 Nov 2;107(44):19079-83.
- [High-intensity exercise training in mice with cardiomyocyte-specific disruption of Serca2.](#)  
Ericsson M, Andersson KB, Amundsen BH, Torp SH, Sjaastad I, *et al.*  
*J Appl Physiol.* 2010 May;108(5):1311-20.
- [Heterogeneous ventricular sympathetic innervation, altered beta-adrenergic receptor expression, and rhythm instability in mice lacking the p75 neurotrophin receptor.](#)  
Lorentz CU, Alston EN, Belcik T, Lindner JR, Giraud GD, Habecker BA.  
*Am J Physiol Heart Circ Physiol.* 2010 Jun;298(6):H1652-60.
- [Developmental changes in left and right ventricular diastolic filling patterns in mice.](#)  
Zhou YQ, Foster FS, Parkes R, Adamson SL.  
*Am J Physiol Heart Circ Physiol* 2003 Oct;285(4):H1563-75.

### **Endothelial Dysfunction**

- [Torcetrapib produces endothelial dysfunction independent of cholesteryl ester transfer protein inhibition.](#)  
Connelly MA, Parry TJ, Giardino EC, Huang Z, Cheung WM, Chen C, Cools F, *et al.*  
*J Cardiovasc Pharmacol.* 2010 May;55(5):459-68.

### **Effects of drugs**

- [Amelioration of doxorubicin-induced cardiotoxicity by an anticancer-antioxidant dual-function compound, HO-3867.](#)
- Dayton A, Selvendiran K, Meduru S, Khan M, Kuppusamy ML, Naidu S, Kálai T, Hideg K, Kuppusamy P.
- *J Pharmacol Exp Ther.* 2011 Nov;339(2):350-7

### **Graft Transplantation**

- [Tissue-intrinsic dysfunction of circadian clock confers transplant arteriosclerosis.](#)  
Cheng B, Anea CB, Yao L, Chen F, Patel V, Merloiu A, Pati P, Caldwell RW, Fulton DJ, Rudic RD.  
*Proc Natl Acad Sci U S A.* 2011 Oct 11;108(41):17147-52

## Bibliography – Cardiovascular Research

- [Eph-B4 prevents venous adaptive remodeling in the adult arterial environment.](#)  
Muto A, Yi T, Harrison KD, Dávalos A, Fancher TT, Ziegler KR, Feigel A, Kondo Y, *et al.*  
*J Exp Med.* 2011 Mar 14;208(3):561-75.
- [Non- invasive in vivo analysis of a murine aortic graft using high resolution ultrasound microimaging.](#)  
Rowinska Z, Zander S, Zerneck A, Jacobs M, Langer S, Weber C, Merx MW, Koepfel TA.  
*Eur J Radiol.* 2011
- [Morphological and functional evaluation of murine heterotopic cardiac grafts using ultrasound biomicroscopy.](#)  
Zhou YQ, Bishay R, Feintuch A, Tao K, Golding F, Zhu W, *et al.*  
*Ultrasound Med Biol* 2007 Jun;33(6):870-9.
- [Comprehensive transthoracic cardiac imaging in mice using ultrasound biomicroscopy with anatomical confirmation by magnetic resonance imaging.](#)  
Zhou YQ, Foster FS, Nieman BJ, Davidson L, Chen XJ, Henkelman RM.  
*Physiol Genomics* 2004 Jul 8;18(2):232-44.

### **Holt-Oram Syndrome**

- [Abnormal cardiac inflow patterns during postnatal development in a mouse model of Holt-Oram syndrome.](#)  
Zhou YQ, Zhu Y, Bishop J, Davidson L, Henkelman RM, Bruneau BG, *et al.*  
*Am J Physiol Heart Circ Physiol* 2005 Sep;289(3):H992-H1001.

### **Hypertrophy**

- [Mitigation of the progression of heart failure with sildenafil involves inhibition of RhoA/Rho-kinase pathway.](#)  
Chau VQ, Salloum FN, Hoke NN, Abbate A, Kukreja RC.  
*Am J Physiol Heart Circ Physiol* 2011 Jun;300(6):H2272-9.

### **Left Ventricle Function**

- [Inhibition of SMAD2 phosphorylation preserves cardiac function during pressure overload.](#)  
Bjørnstad JL, Skrbic B, Marstein HS, Hasic A, Sjaastad I, Louch WE, Florholmen G, Christensen G, Tønnessen T.  
*Cardiovasc Res.* 2012 Jan 1;93(1):100-10
- [High intake of saturated fat, but not polyunsaturated fat, improves survival in heart failure despite persistent mitochondrial defects.](#)  
Galvao TF, Brown BH, Hecker PA, O'Connell KA, O'Shea KM, Sabbah HN, Rastogi S, Daneault C, Des Rosiers C, Stanley WC.  
*Cardiovasc Res.* 2012 Jan 1;93(1):24-32.
- [Farnesyltransferase inhibitor FTI-277 reduces mortality of septic mice along with improved bacterial clearance.](#)  
Yang W, Yamada M, Tamura Y, Chang K, Mao J, Zou L, Feng Y, Kida K, Scherrer-Crosbie M, Chao W, Ichinose F, Yu YM, Fischman AJ, Tompkins RG, Yao S, Kaneki M.  
*J Pharmacol Exp Ther.* 2011 Dec;339(3):832-41.

## Bibliography – Cardiovascular Research

- [Brain-selective overexpression of angiotensin-converting enzyme 2 attenuates sympathetic nerve activity and enhances baroreflex function in chronic heart failure.](#)  
Xiao L, Gao L, Lazartigues E, Zucker IH.  
*Hypertension*. 2011 Dec;58(6):1057-65
- [Quantitative characterization of postnatal growth trends in proximal pulmonary arteries in rats by phase-contrast magnetic resonance imaging.](#)  
Razavi H, Zarafshar SY, Sawada H, Taylor CA, Feinstein JA.  
*Am J Physiol Lung Cell Mol Physiol*. 2011 Sep;301(3):L368-79
- [Dysfunctional ryanodine receptor and cardiac hypertrophy: role of signaling molecules.](#)  
Yamaguchi N, Chakraborty A, Pasek DA, Molckentin JD, Meissner G.  
*Am J Physiol Heart Circ Physiol* 2011 Jun;300(6):H2187-95
- [Calcific aortic valve stenosis: methods, models, and mechanisms.](#)  
Miller JD, Weiss RM, Heistad DD.  
*Circ Res* 2011 May 27;108(11):1392-412. Review.
- [Dimethylarginine dimethylaminohydrolase-1 is the critical enzyme for degrading the cardiovascular risk factor asymmetrical dimethylarginine.](#)  
Hu X, Atzler D, Xu X, Zhang P, Guo H, Lu Z, Fassett J, Schwedhelm E, *et al.*  
*Arterioscler Thromb Vasc Biol* 2011 Jul;31(7):1540-6.
- [Oxidative stress regulates left ventricular PDE5 expression in the failing heart.](#)  
Lu Z, Xu X, Hu X, Lee S, Traverse JH, Zhu G, Fassett J, Tao Y, Zhang P, *et al.*  
*Circulation* 2010 Apr 6;121(13):1474-83
- [Knock-in gain-of-function sodium channel mutation prolongs atrial action potentials and alters atrial vulnerability.](#)  
Blana A, Kaese S, Fortmüller L, Laakmann S, Damke D, van Bragt K, *et al.*  
*Heart Rhythm* 2010 Dec;7(12):1862-9.

### **Longitudinal and MRI Correlation**

- [Quantitative characterization of postnatal growth trends in proximal pulmonary arteries in rats by phase-contrast magnetic resonance imaging.](#)  
Razavi H, Zarafshar SY, Sawada H, Taylor CA, Feinstein JA.  
*Am J Physiol Lung Cell Mol Physiol*. 2011 Sep;301(3):L368-79

### **Marfan Syndrome**

- [Circulating transforming growth factor-beta in Marfan syndrome.](#)  
Matt P, Schoenhoff F, Habashi J, Holm T, Van Erp C, Loch D, *et al.*  
*Circulation* 2009 Aug 11;120(6):526-32.

## Bibliography – Cardiovascular Research

### **Myocardial Infarction**

- [Oxygen cycling in conjunction with stem cell transplantation induces NOS3 expression leading to attenuation of fibrosis and improved cardiac function.](#)  
Khan M, Meduru S, Gogna R, Madan E, Citro L, Kuppusamy ML, Sayyid M, Mostafa M, Hamlin RL, Kuppusamy P.  
Cardiovasc Res. 2012 Jan 1;93(1):89-99.
- [Caveolin-1 deficiency exacerbates cardiac dysfunction and reduces survival in mice with myocardial infarction.](#)  
Jasmin JF, Rengo G, Lymperopoulos A, Gupta R, Eaton GJ, Quann K, Gonzales DM, Mercier I, Koch WJ, Lisanti MP.  
Am J Physiol Heart Circ Physiol. 2011 Apr;300(4):H1274-81
- [Notch1 in bone marrow-derived cells mediates cardiac repair after myocardial infarction.](#)  
Li Y, Hiroi Y, Ngoy S, Okamoto R, Noma K, Wang CY, Wang HW, Zhou Q, Radtke F, Liao R, Liao JK.  
Circulation. 2011 Mar 1;123(8):866-76.
- [The inflammasome promotes adverse cardiac remodeling following acute myocardial infarction in the mouse.](#)  
Mezzaroma E, Toldo S, Farkas D, Seropian IM, Van Tassell BW, Salloum FN, Kannan HR, Menna AC, Voelkel NF, Abbate A.  
Proc Natl Acad Sci U S A. 2011 Dec 6;108(49):19725-30
- [Donor myocardial infarction impairs the therapeutic potential of bone marrow cells by an interleukin-1-mediated inflammatory response.](#)  
Wang X, Takagawa J, Lam VC, Haddad DJ, Tobler DL, Mok PY, Zhang Y, Clifford BT, Pinnamaneni K, Saini SA, Su R, Bartel MJ, Sievers RE, Carbone L, Kogan S, Yeghiazarians Y, Hermiston M, Springer ML.  
Sci Transl Med. 2011 Sep 14;3(100):100ra90\
- [CC chemokine receptor 5 deletion impairs macrophage activation and induces adverse remodeling following myocardial infarction.](#)  
Zamilpa R, Kanakia R, Cigarroa J 4th, Dai Q, Escobar GP, Martinez H, Jimenez F, Ahuja SS, Lindsey ML.  
Am J Physiol Heart Circ Physiol. 2011 Apr;300(4):H1418-26
- [Direct regulation of membrane type 1 matrix metalloproteinase following myocardial infarction causes changes in survival, cardiac function, and remodeling.](#)  
Zavadzkas JA, Mukherjee R, Rivers WT, Patel RK, Meyer EC, Black LE, McKinney RA, Oelsen JM, Stroud RE, Spinale FG.  
Am J Physiol Heart Circ Physiol. 2011 Oct;301(4):H1656-66
- [Guided cardiopoiesis enhances therapeutic benefit of bone marrow human mesenchymal stem cells in chronic myocardial infarction.](#)  
Behfar A, Yamada S, Crespo-Diaz R, Nesbitt JJ, Rowe LA, Perez-Terzic C, Gaussin V, Homsy C, Bartunek J, Terzic A.  
J Am Coll Cardiol. 2010 Aug 24;56(9):721-34.
- [Preventing cardiac remodeling: the combination of cell-based therapy and cardiac support therapy preserves left ventricular function in rodent model of myocardial ischemia.](#)  
Mokashi SA, Guan J, Wang D, Tchantchaleishvili V, Brigham M, Lipsitz S, Lee LS, Schmitto JD, Bolman RM 3rd, Khademhosseini A, Liao R, Chen FY.  
J Thorac Cardiovasc Surg. 2010 Dec;140(6):1374-80

## Bibliography – Cardiovascular Research

- [Repair of acute myocardial infarction by human stemness factors induced pluripotent stem cells.](#)  
Nelson TJ, Martinez-Fernandez A, Yamada S, Perez-Terzic C, Ikeda Y, Terzic A.  
*Circulation* 2009 Aug 4;120(5):408-16.
- [Central infusion of aldosterone synthase inhibitor attenuates left ventricular dysfunction and remodelling in rats after myocardial infarction.](#)  
Huang BS, White RA, Ahmad M, Tan J, Jeng AY, Leenen FH.  
*Cardiovasc Res* 2009 Feb 15;81(3):574-81.
- [IL-10 inhibits inflammation and attenuates left ventricular remodeling after myocardial infarction via activation of STAT3 and suppression of HuR.](#)  
Krishnamurthy P, Rajasingh J, Lambers E, Qin G, Losordo DW, Kishore R.  
*Circ Res* 2009 Jan 30;104(2):e9-18.
- [Angiotensin II type 2 receptor stimulation: a novel option of therapeutic interference with the renin-angiotensin system in myocardial infarction?](#)  
Kaschina E, Grzesiak A, Li J, Foryst-Ludwig A, Timm M, Rompe F, *et al.*  
*Circulation* 2008 Dec 9;118(24):2523-32.

### **Neonatal Cardiovascular Function**

- [High-frequency ultrasound assessment of the murine heart from embryo through to juvenile.](#)  
Corrigan N, Brazil DP, Auliffe FM.  
*Reprod Sci.* 2010 Feb;17(2):147-57.
- [Ventricular rotation is independent of cardiac looping: a study in mice with situs inversus totalis using speckle-tracking echocardiography.](#)  
Frank LH, Yu Q, Francis R, Tian X, Samtani R, Sahn DJ, Leatherbury L, Lo CW.  
*J Am Soc Echocardiogr.* 2010 Mar;23(3):315-23.
- [Initial experience with high frequency ultrasound for the newborn C57BL mouse.](#)  
Bose AK, Mathewson JW, Anderson BE, Andrews AM, Martin Gerdes A, Benjamin Perryman M, Grossfeld PD.  
*Echocardiography.* 2007 Apr;24(4):412-9.
- [Developmental changes in left and right ventricular diastolic filling patterns in mice.](#)  
Zhou YQ, Foster FS, Parkes R, Adamson SL.  
*Am J Physiol Heart Circ Physiol.* 2003 Oct;285(4):H1563-75

### **Pulmonary Hypertension**

- [Estrogen rescues preexisting severe pulmonary hypertension in rats.](#)  
Umar S, Iorga A, Matori H, Nadadur RD, Li J, Maltese F, van der Laarse A, Eghbali M.  
*Am J Respir Crit Care Med.* 2011 Sep 15;184(6):715-23
- [The critical roles of platelet activation and reduced NO bioavailability in fatal pulmonary arterial hypertension in a murine hemolysis model.](#)  
Hu W, Jin R, Zhang J, You T, Peng Z, Ge X, Bronson RT, Halperin JA, *et al.*  
*Blood.* 2010 Sep 2;116(9):1613-22. Epub 2010 May 28.

## Bibliography – Cardiovascular Research

- [Noninvasive assessment of murine pulmonary arterial pressure: validation and application to models of pulmonary hypertension.](#)  
Thibault HB, Kurtz B, Raheer MJ, Shaik RS, Waxman A, Derumeaux G, *et al.*  
*Circ Cardiovasc Imaging* 2010 Mar;3(2):157-63.
- [Spontaneous Adult-Onset Pulmonary Arterial Hypertension Attributable to Increased Endothelial Oxidative Stress in a Murine Model of Hereditary Hemorrhagic Telangiectasia.](#)  
Toporsian M, Jerkic M, Zhou YQ, Kabir MG, Yu LX, McIntyre BA, *et al.*  
*Arterioscler Thromb Vasc Biol* 2009 Dec 30. [Epub ahead of print]
- [Adiponectin deficiency: a model of pulmonary hypertension associated with pulmonary vascular disease.](#)  
Summer R, Fiack CA, Ikeda Y, Sato K, Dwyer D, Ouchi N, *et al.*  
*Am J Physiol Lung Cell Mol Physiol* 2009 Sep;297(3):L432-8.

### **Rabbit Cardiovascular**

- [Systemic injection of planktonic forms of mammalian-derived nanoparticles alters arterial response to injury in rabbits.](#)  
Schwartz MK, Lieske JC, Hunter LW, Miller VM.  
*Am J Physiol Heart Circ Physiol* 2009 May;296(5):H1434-41.

### **Rat Cardiovascular**

- [Ginseng inhibits cardiomyocyte hypertrophy and heart failure via NHE-1 inhibition and attenuation of calcineurin activation.](#)  
Guo J, Gan XT, Haist JV, Rajapurohitam V, Zeidan A, Faruq NS, Karmazyn M.  
*Circ Heart Fail.* 2011 Jan 1;4(1):79-88.
- [Alterations of pre- and postsynaptic noradrenergic signaling in a rat model of adriamycin-induced cardiotoxicity.](#)  
Kenk M, Thackeray JT, Thorn SL, Dhami K, Chow BJ, Ascah KJ, *et al.*  
*J Nucl Cardiol* 2010 Apr;17(2):254-63.
- [Central infusion of aldosterone synthase inhibitor attenuates left ventricular dysfunction and remodelling in rats after myocardial infarction.](#)  
Huang BS, White RA, Ahmad M, Tan J, Jeng AY, Leenen FH.  
*Cardiovasc Res* 2009 Feb 15;81(3):574-81.
- [Angiotensin II type 2 receptor stimulation: a novel option of therapeutic interference with the renin-angiotensin system in myocardial infarction?](#)  
Kaschina E, Grzesiak A, Li J, Foryst-Ludwig A, Timm M, Rompe F, *et al.*  
*Circulation* 2008 Dec 9;118(24):2523-32.

## Bibliography – Cardiovascular Research

### **Right Ventricle**

- [Suppression of histone deacetylases worsens right ventricular dysfunction after pulmonary artery banding in rats.](#)  
Bogaard HJ, Mizuno S, Hussaini AA, Toldo S, Abbate A, Kraskauskas D, Kasper M, *et al.*  
*Am J Respir Crit Care Med.* 2011 May 15;183(10):1402-10
- [Myocyte necrosis underlies progressive myocardial dystrophy in mouse dsq2-related arrhythmogenic right ventricular cardiomyopathy.](#)  
Pilichou K, Remme CA, Basso C, Campian ME, Rizzo S, Barnett P, Scicluna BP, *et al.*  
*J Exp Med.* 2009 Aug 3;206(8):1787-802

### **Stem Cells**

- [Guided cardiopoiesis enhances therapeutic benefit of bone marrow human mesenchymal stem cells in chronic myocardial infarction.](#)  
Behfar A, Yamada S, Crespo-Diaz R, Nesbitt JJ, Rowe LA, Perez-Terzic C, *et al.*  
*J Am Coll Cardiol* 2010 Aug 24;56(9):721-34.

### **Strain**

- [Echocardiographic speckle-tracking based strain imaging for rapid cardiovascular phenotyping in mice.](#)  
Bauer M, Cheng S, Jain M, Ngoy S, Theodoropoulos C, Trujillo A, Lin FC, Liao R.  
*Circ Res.* 2011 Apr 15;108(8):908-16

### **Stress Echocardiography**

- [Cardiomyocyte PDGFR-beta signaling is an essential component of the mouse cardiac response to load-induced stress.](#)  
Chintalgattu V, Ai D, Langley RR, Zhang J, Bankson JA, Shih TL, *et al.*  
*J Clin Invest* 2010 Feb 1;120(2):472-84.
- [Effective rescue of dystrophin improves cardiac function in dystrophin-deficient mice by a modified morpholino oligomer.](#)  
Wu B, Moulton HM, Iversen PL, Jiang J, Li J, Li J, *et al.*  
*Proc Natl Acad Sci U S A* 2008 Sep 30;105(39):14814-9.
- [Role of the multidomain protein spinophilin in blood pressure and cardiac function regulation.](#)  
da Costa-Goncalves AC, Tank J, Plehm R, Diedrich A, Todiras M, Gollasch M, *et al.*  
*Hypertension* 2008 Oct;52(4):702-7.

## Bibliography – Cardiovascular Research

### **Systolic Function**

- [Losartan decreases cardiac muscle fibrosis and improves cardiac function in dystrophin-deficient mdx mice.](#)  
Spurney CF, Sali A, Guerron AD, Iantorno M, Yu Q, Gordish-Dressman H, *et al.*  
*J Cardiovasc Pharmacol Ther* 2011 Mar;16(1):87-95.

### **Valvular Flow & Function**

- [Calcific aortic valve stenosis: methods, models, and mechanisms.](#)  
Miller JD, Weiss RM, Heistad DD.  
*Circ Res* 2011 May 27;108(11):1392-412. Review.
- [Metformin attenuates cardiac fibrosis by inhibiting the TGFbeta1-Smad3 signalling pathway.](#)  
Xiao H, Ma X, Feng W, Fu Y, Lu Z, Xu M, *et al.*  
*Cardiovasc Res* 2010 Aug 1;87(3):504-13.
- [Torcetrapib Produces Endothelial Dysfunction Independent of CETP Inhibition.](#)  
Connelly MA, Parry TJ, Giardino EC, Huang Z, Cheung WM, Chen C, *et al.*  
*J Cardiovasc Pharmacol* 2010 May;55(5):459-68.
- [Transcriptional coactivators PGC-1alpha and PGC-1beta control overlapping programs required for perinatal maturation of the heart.](#)  
Lai L, Leone TC, Zechner C, Schaeffer PJ, Kelly SM, Flanagan DP, *et al.*  
*Genes Dev* 2008 Jul 15;22(14):1948-61.
- [Mouse heart valve structure and function: echocardiographic and morphometric analyses from the fetus through the aged adult.](#)  
Hinton RB Jr, Alfieri CM, Witt SA, Glascock BJ, Khoury PR, Benson DW, *et al.*  
*Am J Physiol Heart Circ Physiol* 2008 Jun;294(6):H2480-8.

### **Vascular**

- [p190 RhoGTPase-activating protein links the beta1 integrin/caveolin-1 mechanosignaling complex to RhoA and actin remodeling.](#)  
Yang B, Radel C, Hughes D, Kelemen S, Rizzo V.  
*Arterioscler Thromb Vasc Biol.* 2011 Feb;31(2):376-83
- [Tissue-intrinsic dysfunction of circadian clock confers transplant arteriosclerosis.](#)  
Cheng B, Anea CB, Yao L, Chen F, Patel V, Merloiu A, Pati P, Caldwell RW, Fulton DJ, Rudic RD.  
*Proc Natl Acad Sci U S A.* 2011 Oct 11;108(41):17147-52.
- [Longitudinal common carotid artery wall motion is associated with plaque burden in man and mouse.](#)  
Svedlund S, Gan LM.  
*Atherosclerosis* 2011 Jul;217(1):120-4.

## Bibliography – Cardiovascular Research

- [p190 RhoGTPase-activating protein links the  \$\beta\$ 1 integrin/caveolin-1 mechanosignaling complex to RhoA and actin remodeling.](#)  
Yang B, Radel C, Hughes D, Kelemen S, Rizzo V.  
*Arterioscler Thromb Vasc Biol.* 2011 Feb;31(2):376-83.
- [Matrix metalloproteinase 2 and 9 dysfunction underlie vascular stiffness in circadian clock mutant mice.](#)  
Anea CB, Ali MI, Osmond JM, Sullivan JC, Stepp DW, Merloiu AM, Rudic RD.  
*Arterioscler Thromb Vasc Biol.* 2010 Dec;30(12):2535-43
- [High-throughput Doppler toolbox for preclinical drug development.](#)  
Azer K, Desiderio MC, Tong C, Bunzel M, Campbell BR, Shevell D, and Walker M III  
*JALA* 2010 Aug;15:287-96
- [In vivo assessment of the effects of ginsenoside Rb1 on intimal hyperplasia in ApoE knockout mice.](#)  
Chai H, Schultz G, Aghaie K, Zhou W.  
*J Surg Res.* 2010 Jul;162(1):26-32.
- [Molecular Imaging of Vasa Vasorum Neovascularization via DEspR-targeted Contrast-enhanced Ultrasound Micro-imaging in Transgenic Atherosclerosis Rat Model.](#)  
Decano JL, Moran AM, Ruiz-Opazo N, Herrera VL.  
*Mol Imaging Biol.* 2010 Oct 23 [Epub ahead of print].
- [The effects of acarbose treatment on intimal hyperplasia in a rat carotid endarterectomy model of diet-induced insulin resistance.](#)  
Nyalala JO, Luo S, Campbell DN, Brown AT, Moursi MM.  
*Vasc Endovascular Surg.* 2010 Oct;44(7):560-7.
- [Aortic regurgitation dramatically alters the distribution of atherosclerotic lesions and enhances atherogenesis in mice.](#)  
Zhou YQ, Zhu SN, Foster FS, Cybulsky MI, Henkelman RM.  
*Arterioscler Thromb Vasc Biol.* 2010 Jun;30(6):1181-8.

### **Vascular Injection**

- [Temporal characterization of the functional density of the vasa vasorum by contrast-enhanced ultrasonography maximum intensity projection imaging.](#)  
Lee SC, Carr CL, Davidson BP, Ellegala D, Xie A, Ammi A, Belcik T, Lindner JR.  
*JACC Cardiovasc Imaging.* 2010 Dec;3(12):1265-72.

## Bibliography – Cardiovascular Research



**VISUALSONICS**

**VisualSonics Inc.**

T. 1.416.484.5000

Toll Free (North America) 1.866.416.4636

Toll Free (Europe) +800.0751.2020

E. [info@visualsonics.com](mailto:info@visualsonics.com)

[www.visualsonics.com](http://www.visualsonics.com)

VisualSonics, VisualSonics logo, VisualSonics dot design, Vevo, Vevo MicroMarker, VevoStrain, VevoCQ, SoniGene, RMV, EKV, MicroScan, LAZRTight, Insight through In Vivo Imaging, are registered trademarks (in some jurisdictions) or unregistered trademarks of VisualSonics Inc.

© 2011 VisualSonics Inc. All rights reserved.